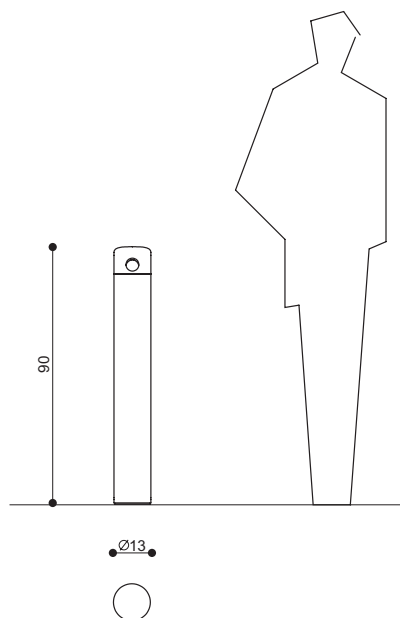


CUERPO / BODY			
Peso / Weight		10.2 Kg	
Material / Material	Altura / Height	Acabado / Finish	Sección / Section
Inox AISI 304	90x 13 Cm	Pulido <i>Polished</i>	129x2mm



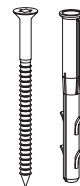
## SUMINISTRO SUPPLY LIST



x1 Cenicero / *Ashtray*



x3 DIN 7991 M6x16 INOX



x3 S10R-100



x1 Llave / Key DIN 911 N° 6



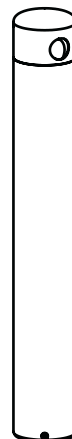
x1 Llave / Key DIN 911 N° 4



SANTA & COLE

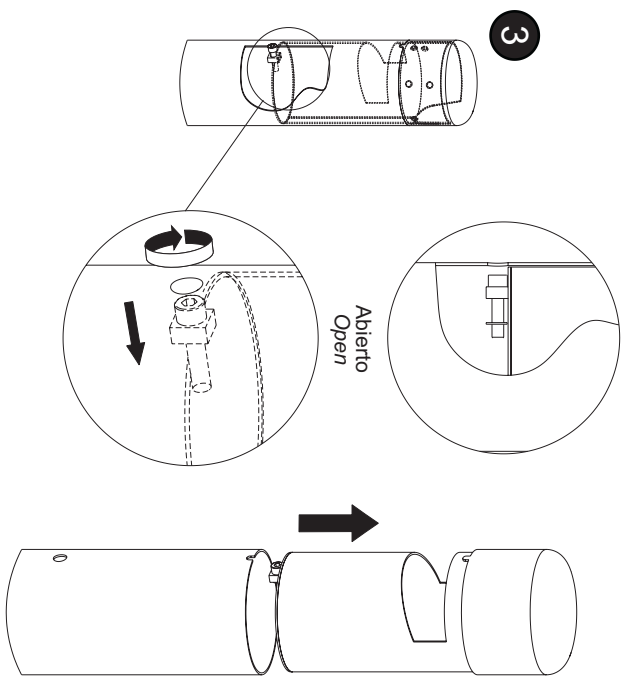
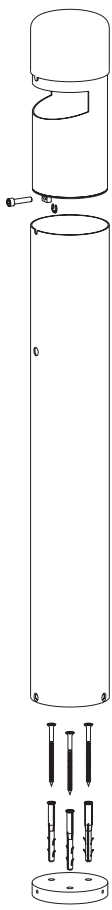
## HUMO

diseño/design by  
Equipo Santa & Cole  
2005



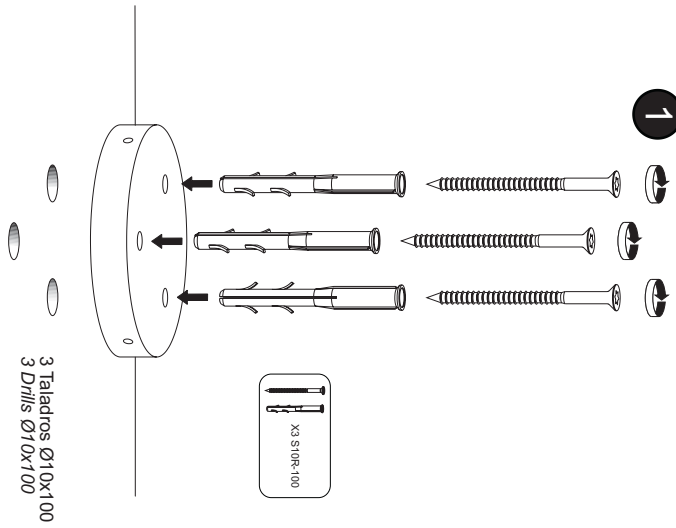
05/2008

instrucciones de montaje  
*assembly instructions*

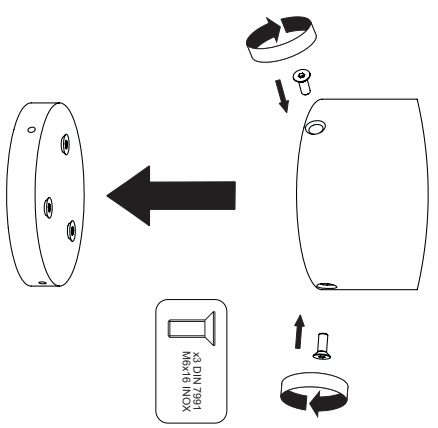


Apretar el tornillo para poder extraer la parte superior del cenicero  
*Tighten the screw to remove the top of the ashtray*

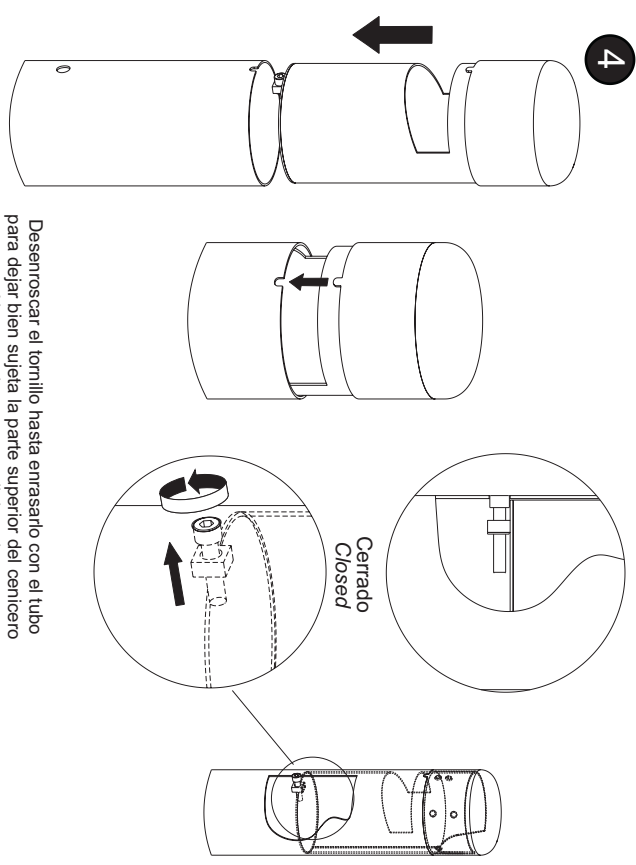
1



2



4



Desenroscar el tornillo hasta enrasarlo con el tubo  
 para dejar bien sujeta la parte superior del cenicero  
*Unscrew the screw until the tube  
 to subject the top of the ashtray*